



Greater Vallejo Recreation District

GVRD promotes wellness and healthy lifestyles by providing safe parks and innovative and fun recreation programs for all residents.

BOARD OF DIRECTORS

Rizal Aliga
Robert Briseño
Thomas Judt
Stacey Kennington
Tom Starnes

GENERAL MANAGER

Gabe Lanusse

In compliance with the Americans with Disabilities Act, Special assistance for participating in this meeting can be obtained by contacting the District Office at 707-648-4604. A 48-hour notification would enable the District to make reasonable accommodations to ensure accessibility to this meeting. (28 CFR 35.102-35.104 ADA Title II).

Facility and Development Committee Agenda

Directors: Briseño and Starnes

Tuesday, April 23, 2024 - 3:30 p.m.

Administrative Building – Board Room, 401 Amador Street

This committee shall study and recommend acquisitions of real property and the type of facilities that should be planned for new acquisitions, all joint planning and development programs for district facilities, including any additional facility needs, and the development of present parks. This committee shall review and make recommendations for facilities and/or developments. This committee shall review matters related to the engineering and operation of facilities and short and long-range capital improvement plans.

1. Public Comment:
 - a. Members of the public may speak on items within the jurisdiction of the Committee. Each speaker is limited to 3 minutes and a spokesperson for an organization is limited to 5 minutes.
2. Lake Dalwigk Park Improvements
3. Blue Rock Springs Park Master Plan
4. Budgeting:
 - a. Proposed Measure K Budget
 - b. Proposed Capital Improvement Budget
 - c. Maintenance and Deferred Maintenance Discussion
5. Terrace Park Playground Replacement-Prop. 68
6. City Park
7. Cunningham Aquatic Complex Restroom Improvements
8. Request to rename Sheveland Park Garden
9. Meeting Adjourn

RACHEL RODI MOSAICS

336 Georgia St. #1, Vallejo, CA 94590
510-301-8663 rachel@rachelrodi.com
www.rachelrodi.com

CLIENT: City of Vallejo, CA
ARTISTS: Rachel Rodi & Guy Fuerte, dba Rachel Rodi Mosaics
DATE: April 9, 2024
RE: PRELIMINARY CONTRACT FOR ARTWORK AT LAKE DALWIGK PARK

PROJECT DESCRIPTION

Artwork installation at Lake Dalwigk Park includes two components:

1. Monument Signs: Two custom monument signs will be installed at Lake Dalwigk Park entryways.
2. Mosaic Artwork in Concrete Pathway: Four custom mosaic insets will be installed in a new concrete pathway between Lake Dalwigk Park's playground and entry to the basketball courts.

MONUMENT SIGNS

Monument Signs - Design & Planning

Dimensions: 48" wide x 48" deep x 90" high each sign

Each monument sign will be made of two 48" wide x 90" high x 3/16" thick Corten steel sheets joined at one edge to create a v-shape. Each 48" wide panel will display the same sign design. Laser cut aluminum letters stating 'Lake Dalwigk Park' will be placed towards the top of the signs. Artwork below the letters will be laser cut out of the Corten steel sheets and depict a stylized design inspired by nature of Lake Dalwigk Park.

The signs will be supported by 3" square tube steel framing and posts. The posts will extend 2' below the ground plane and be set in concrete. Edges of all cut metal will be smooth and safe to the touch.

Monument Signs design work includes the following:

- Artwork placement, structure and design research and development
- Preliminary sketches and materials sourcing
- Final to-scale black and white design of signs, with one revision to final design
- Final to-scale color design, with one revision to final design
- Materials selection

Monument Signs - Production & Installation

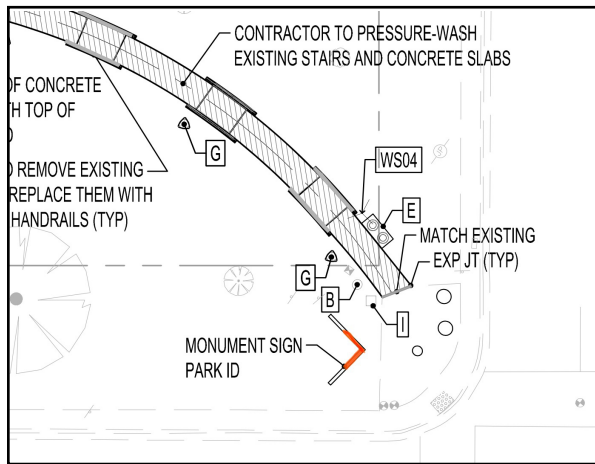
The monument signs will be created by a local, professional metal fabricator. The metal fabricator will install the signs during 1 to 2 days on-site with Artist's guidance.

Sign fabrication and installation include the following:

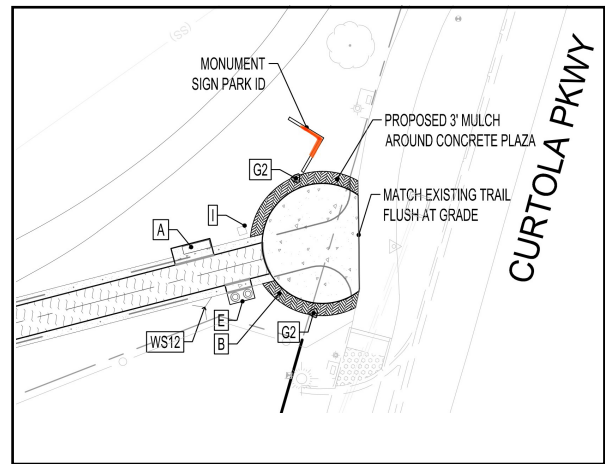
- Artists coordinate with contractor and metal fabricator during all stages of fabrication and installation
- Creation and installation of signs by metal fabricator
- Materials required for project (all materials will be made in the USA)
- Artists oversee sign placement and installation on-site

Monument Signs - Proposed Locations

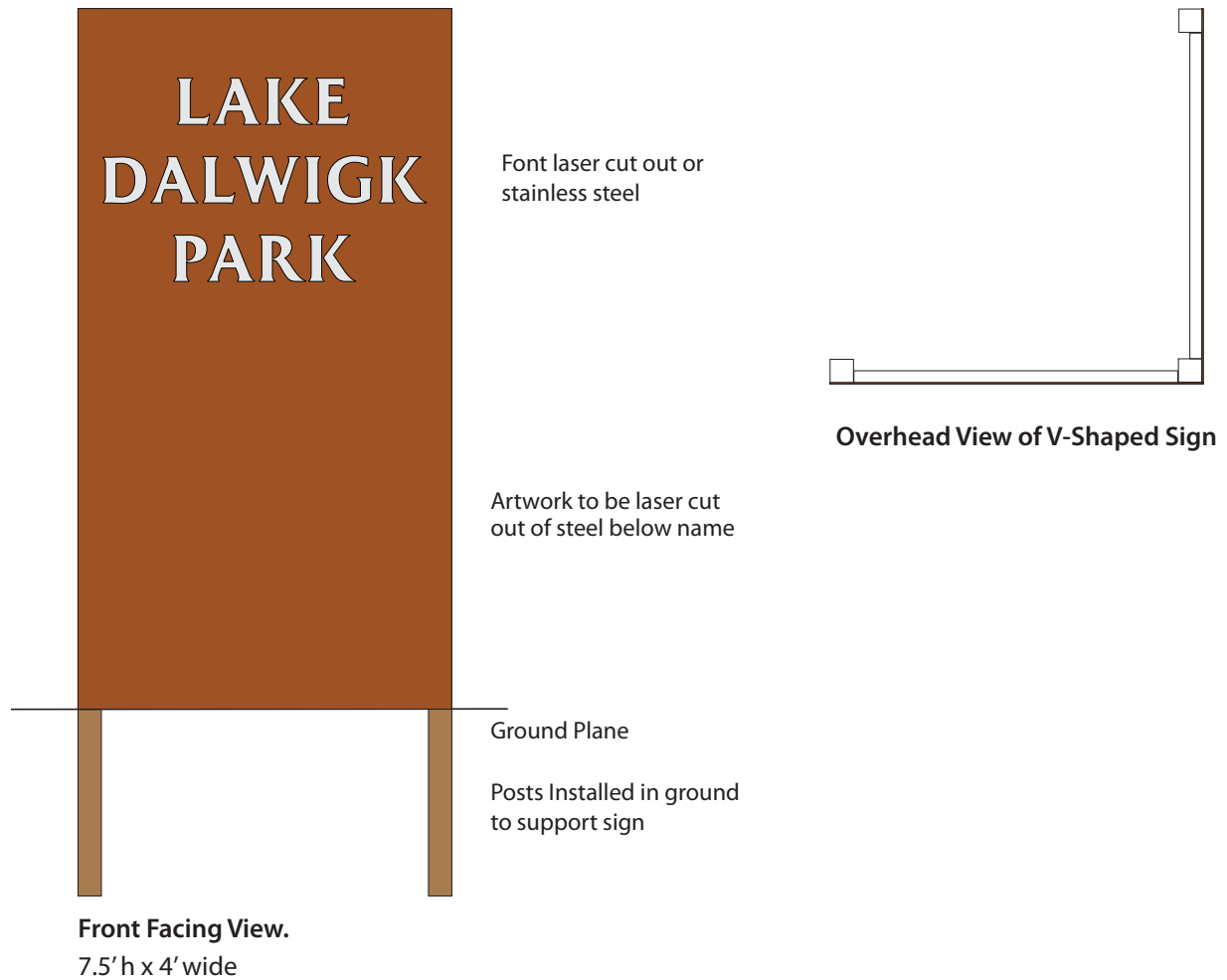
Monument Sign #1 -Lemon St. & 5th St. entry



Monument Sign #2 -Curtola Parkway park entry



Monument Signs - Preliminary Concept Visuals



MOSAIC ARTWORK IN CONCRETE PATHWAY

Mosaic Artwork - Design & Planning

Dimensions: 80" wide x 45" deep each mosaic artwork (25 square feet each)

Four mosaic artworks will be installed in the concrete pathway area between the playground and basketball courts, which will be placed approximately 50' to 60' from each other. The designs will depict overhead views of flying birds native to Lake Dalwigg Park, in an abstract, modern style. Simplified colors and patterns of the environment below the flying bird will fill the artwork background.

The mosaic design and setting work will be in a simple to mid range complexity, with most areas using 3" - 8" sized pieces in mostly a 'broken tile' setting style. Mosaic materials to be used are colorful exterior grade ceramic tile with a slip proof glaze suitable for exterior walkways.

Mosaic art design work includes the following:

- Artworks placement and design research and development
- Preliminary sketches and materials sourcing
- Final to-scale black and white design, with one revision
- Final to-scale color design, with one revision
- Materials selection and samples

Mosaic Artwork - Materials

All materials made in the USA. Materials included:

- Full scale printed design templates
- Premium quality, exterior grade ceramic tile with slip proof, textured glaze with DCOF wet .60
- Fiberglass mesh backing and mesh adhesive
- Professional grade thinset adhesive, cement based grout and grout sealer
- Miscellaneous: sponges, plastic sheeting, tarps, tape, etc.

Mosaic Artwork - Production & Installation

The mosaics will be created on fiberglass mesh sections in the Artist's studio. Upon completion, Artists will install the mosaics during 3 to 4 days on-site.

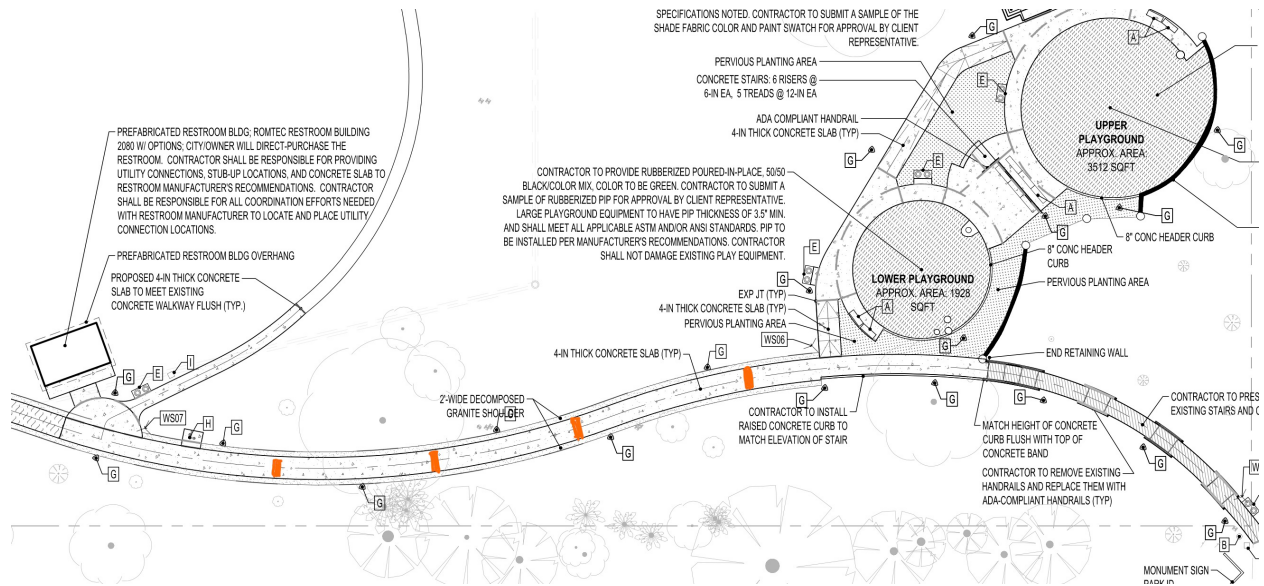
Mosaic production and installation include the following:

- Provide mosaic inset placement locations and inset specifications to project contractor
- Calculate, order and handle all materials
- Increase mosaic designs to full-scale templates
- Section, code and transfer mosaic designs to fiberglass mesh sections
- Cut, fit and set mosaic artwork onto fiberglass mesh sections
- Install, grout and seal mosaics during 3-4 days on-site
- Protection of finished surfaces around mosaic during installation

Mosaic Artwork - Substrate Specifications

- Mosaic will be set onto concrete pavement prepared by others.
- Concrete must cure minimum of 28 days before mosaic tile work is applied
- The mosaic substrates must be clean, raw, *unsealed* concrete that is free of cracks
- Artist will provide placement and specification details for inset areas required for mosaic

Mosaic Artwork - Proposed Locations



PROJECT FEES AND PAYMENT SCHEDULE

Design	\$ 5,500
Mosaic Materials	\$ 5,000
Artwork Production and Installation	\$54,500
Total Project Cost:	\$65,000

Due upon contract signing to initiate project \$32,500

Due upon completion of project. A final invoice will be provided \$32,500

Please make checks payable to Rachel Rodi Mosaics.

CONTRACT TERMS

All materials used for artwork will be made in the United States.

Artist is not responsible for condition or preparation of concrete pathway mosaic substrate. Mosaic will be set onto substrate prepared by others. Client or other will be responsible for ensuring substrate is properly prepared, structurally sound and ready for mosaic installation.

Superior methods and products will be used for mosaic work. Artist will guarantee all tile setting work and installation methods, but Artist is not responsible for damage to artwork due to faulty substrate, damage to substrate structure, improper care or use of mosaic, or other factors Artist is not directly responsible for.

Rights of the parties:

- A. The Artists retain all rights under the copyright Act of 1976 and all other rights in and to the work, except ownership and possession and except as such rights are limited under this paragraph. The Artists grant to the Client and their assigns the right and license to make two-dimensional reproductions of the Work for non-commercial purposes including, but not limited to: (i) use in advertising, brochure, media publicity and catalogs or other similar publications; (ii) use in not for profit promotional materials, (iii) use in City of Vallejo and GVRD signage and branding.
- B. Client shall give a credit to Artists in any post or publication, printed or virtual, substantially in the following form: 'Artwork by Rachel Rodi and Guy Fuerte'.

Cancellation: In the event of cancellation of this project by Client or their representatives, fees paid for materials ordered and work completed are non-refundable.

ACCEPTANCE OF CONTRACT

The prices, specifications and conditions delineated above are hereby accepted. Payment will be made as outlined above.

Client _____ Date _____

Artist Rachel Rodi _____ Date _____

Artist Guy Fuerte _____ Date _____

- Phase 1
- Phase 2
- Phase 3
- Phase 4
- Phase 5
- Phase 6
- Phase 7



BLUE ROCK SPRINGS

PHASING DIAGRAM

VALLEJO, CA

