



Greater Vallejo Recreation District

10-Year Comprehensive Parks and Recreation Master Plan

September 2021

Your Team



**Art Thatcher,
Principal
GreenPlay, LLC**



**Jeff Milkes,
Project Manager
GreenPlay, LLC**



The 2021 Master Parks & Recreation Master Plan will be the guiding document for planning, recreation, maintenance, and financing for District parks and recreation facilities



4 Stages of Public Engagement



Strategic Kick-Off

- Critical Success Factors
- Key focus areas
- Meeting schedule
- Identification of Key Stakeholders
- Gathering of All Relevant Documents
- Briefing with Decision Makers



1 Information Gathering

- **Needs Assessment**
 - Staff
 - Stakeholders
 - Public Meetings
 - Focus groups
 - Interviews
 - Surveys
 - Online engagement
- **Inventory**
 - All Assets
 - All Program Locations
 - Other Providers
- **Level of Service Analysis**
 - GIS component-based mapping
 - Quality, Quantity, Functionality
- **Community Profile**
 - Historical & Planning Context
 - Demographics
- **Trends**



2 Findings & Visioning

- **Presentation/Feedback Sessions**
 - Staff
 - Stakeholders
 - Decision Makers
- **What We Have Discovered**
- **Key Issues Matrix**
- **Key Ideas and Themes for Improvement**
- **Analysis**
 - Programming
 - Operations
 - Maintenance
 - Marketing & Communications
 - Financial Resources



3 Draft Recommendations

- **Summary Findings**
- **Strategies**
 - Long-Term Vision
 - Short-Term Action
- **Implications**
 - Financial
 - Operational
 - Maintenance
- **Recommendations**
- **Action Plan**
 - Tasks
 - Timing
 - Costs
- **Review & Revisions**



4 Final Plan

- **Review**
 - Staff
 - Public
 - Decision Maker
- **Distribute/Post**



Implementation

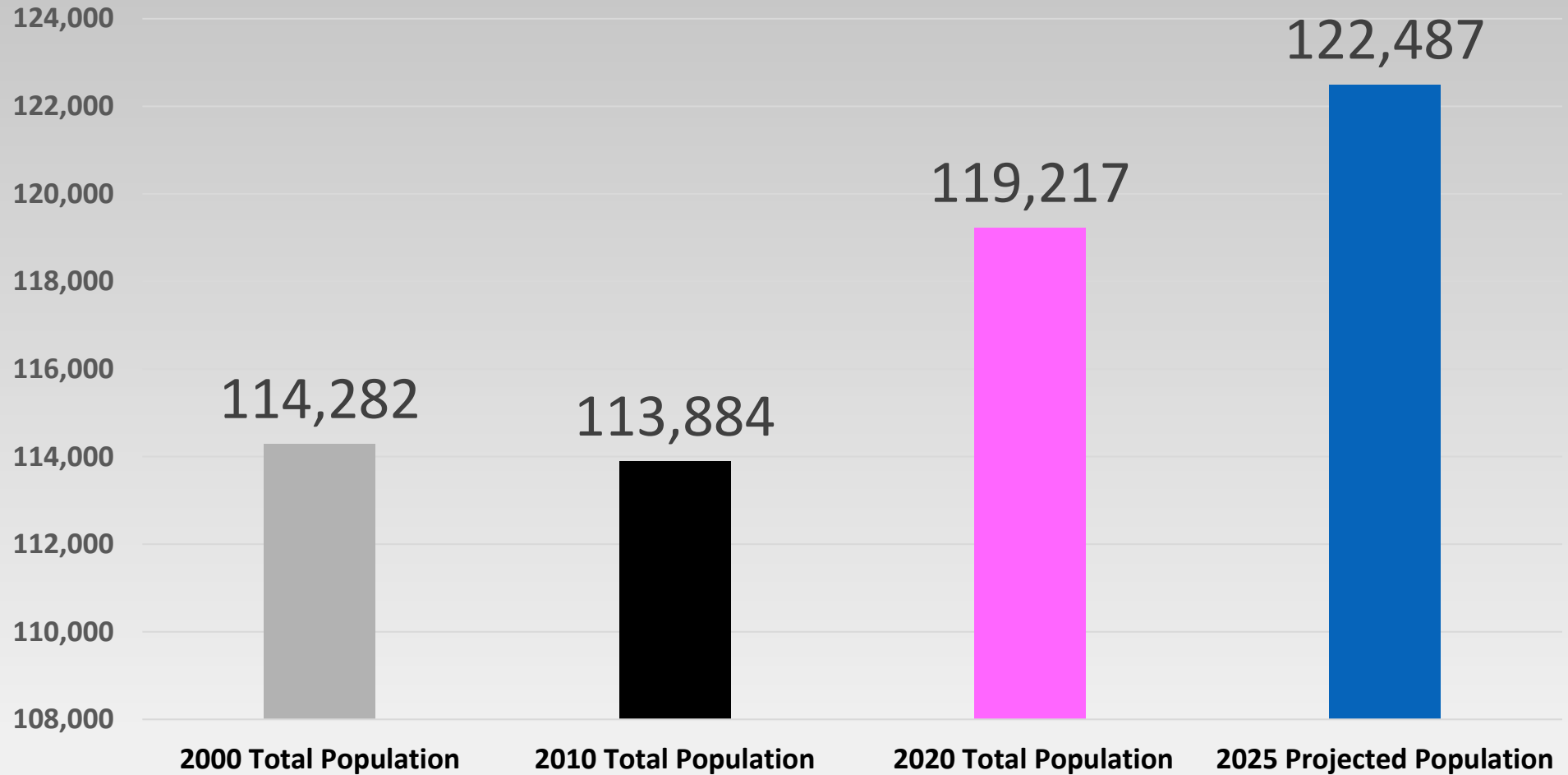
- **Action Plan**
- **Annual Review**



Typically our Strategic/Master Plans include a 5-year focus on operations, 10-year focus on capital, and 20 year strategic vision. Other elements and tools are added as needed for a community-specific plan.

GVRD Population

119,217
Population



Source: 2020 Esri Business Analyst; Projected Population based on Esri annual growth rate (2020 – 2025) of 0.54%.

Public Engagement

1037
Participants

Focus Groups	08
Stakeholder Interviews	10
Public Zoom Webinar	01
Random Invitation	
Survey Responses	372
Open Link	
Survey Responses	510

*GVRD Staff & Board Members

*City of Vallejo & Solano County Officials

*Key Partners

*Civic Groups

*District Residents



Greater Vallejo Recreation District

Mission

The GVRD promotes wellness and healthy lifestyles by providing safe parks and innovative, fun recreation programs for all residents.

Vision

The GVRD aspires to provide safe and world class parks and facilities and innovative, creative, and affordable recreation opportunities.

Hallmarks

Safety
Diversity, Equity, and Inclusion
Creative and Playful
Professional Organization



<p>We aspire to create and maintain safe, clean, and secure spaces for play.</p> <p>We work to provide active parks that help to protect our environment.</p> <p>We are respectful of community needs and work to balance safety and compassion.</p> <p>We foster positive relationships with law enforcement agencies as partners.</p> <p>All District employees are committed to a culture of workplace safety.</p>	<p>We strive to reflect diversity, equity, and inclusion in all our programs and services.</p> <p>We build strong relationships based on trust and are responsive to the input and counsel of our community and partners.</p> <p>We endeavor to provide equitable provision of services and access for all members of our community.</p> <p>We prioritize and balance affordable access to programs and services, with fiscal responsibility.</p>	<p>We inspire to contribute to our healthy, playful, and active lifestyles</p> <p>We aspire to be creative, reward novelty and help each other and our community play</p> <p>We value high quality over quantity, and the provision of world class recreation.</p> <p>We collaborate, seek out each other's opinions and value and support our culture of learning throughout our organization.</p> <p>We constantly innovate by improving our knowledge and skills to meet the changing needs of our community.</p> <p>We actively support health and wellness for all members of our Community.</p>	<p>We seek to connect with our community, and continually engage our residents.</p> <p>We provide exceptional customer service.</p> <p>We are professional, aspiring to lead the way both locally and nationally.</p> <p>We value honesty, integrity, and transparency.</p> <p>We are a team, dedicated to providing the best possible services, parks, facilities, and programs by working collaboratively.</p> <p>We are committed to being accountable to our community members, our partners, our teammates and ourselves.</p>
---	---	---	--

Recurring Themes

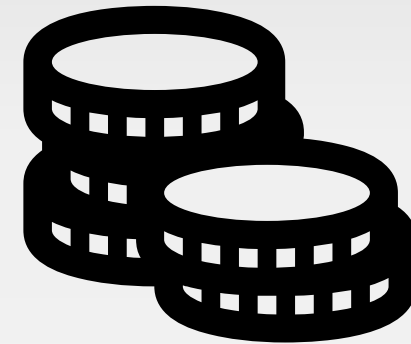
Active and Healthy Lifestyles

- Health and wellness activities
- Trails and pathways
- New sports center
- Additional aquatics activities and facility



Sustainable & Resilient Funding & Resources

- Partnerships
- Staffing and workloads
- Update land dedication and development fees
- Bonds for long term improvements



Recurring Themes

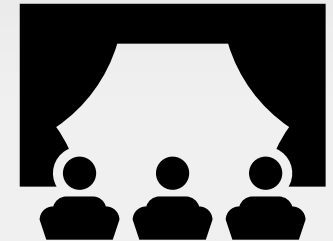
Connected and Walkable Community

- Parks and recreation system that connects people to people, people to parks and parks to parks
- Walkable access to parks and facilities



Extraordinary Programs

- Senior Programs and Services
- Teens/Youth Programs
- Art Programs
- Sports Programs
- Cultural Programs



Recurring Themes

Quality Park Experiences

- Safe, clean and green parks and spaces
- Renovate and take care of existing parks – fill gaps
- Add additional dog park
- Address inappropriate behavior, homelessness
- Activate spaces



Access for all Residents

- Focus on diversity, equity, and inclusion
- Affordable programs



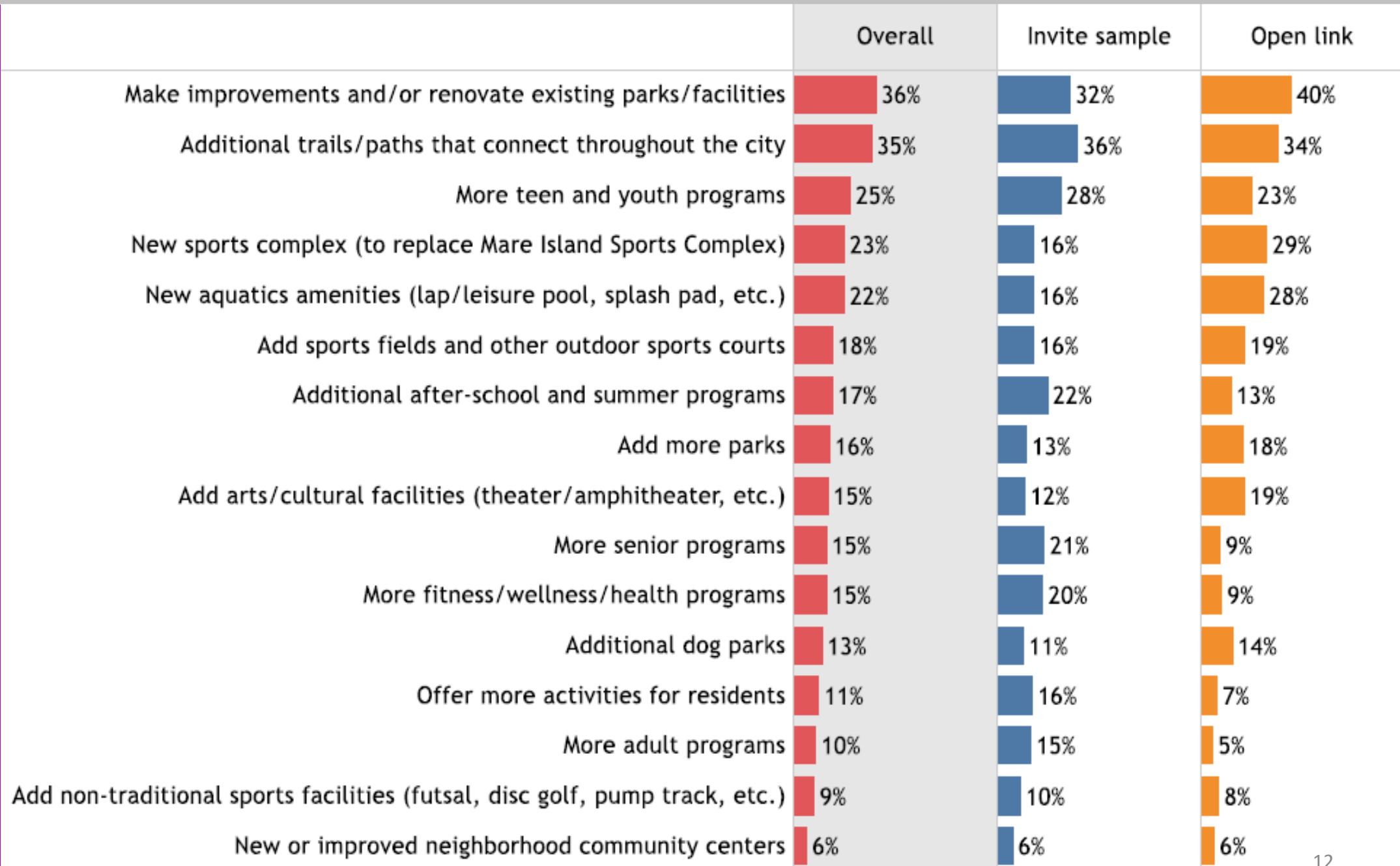
Recurring Themes

Improved Infrastructure

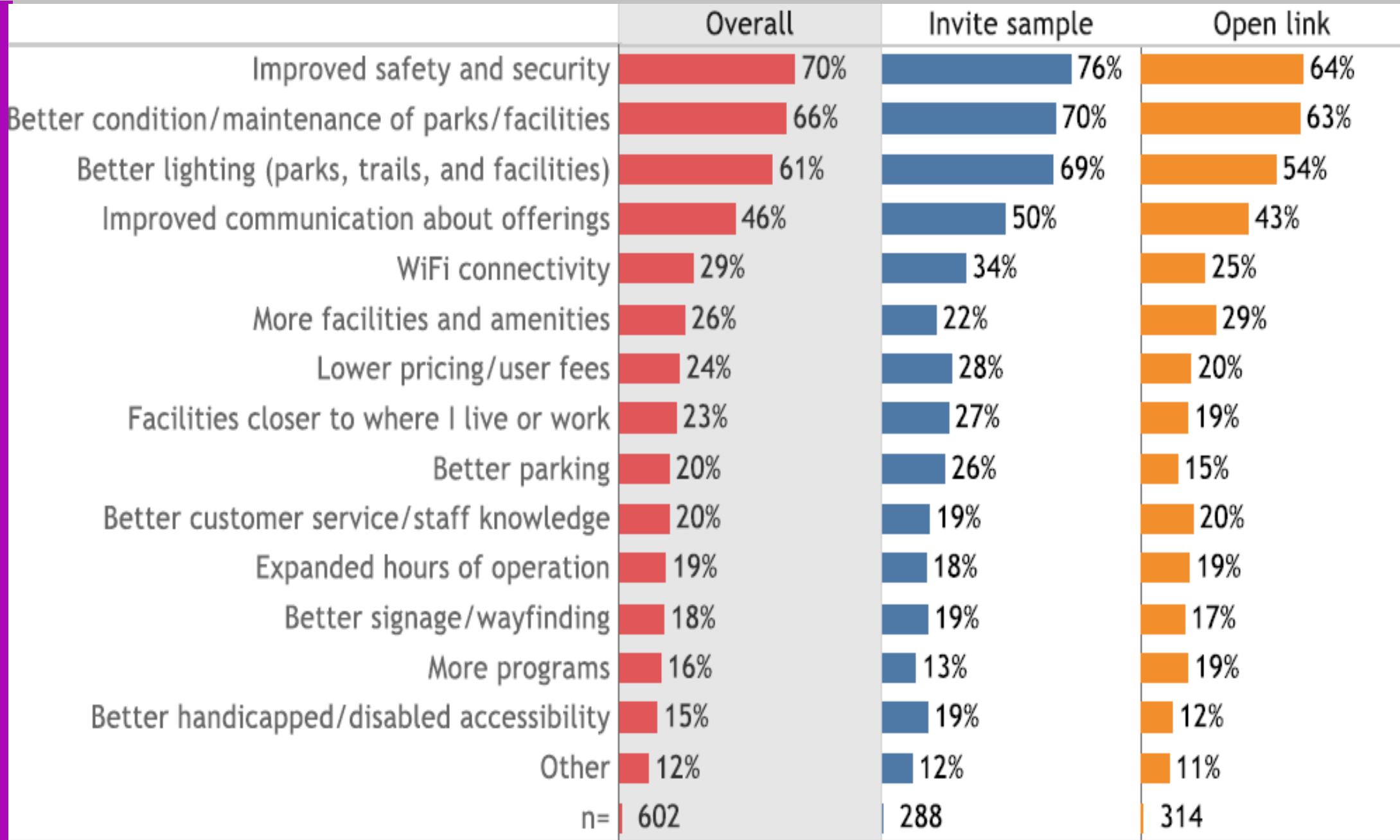
- Irrigation & turf
- Deferred maintenance
- ADA
- Restrooms



FUTURE GVRD PRIORITIES



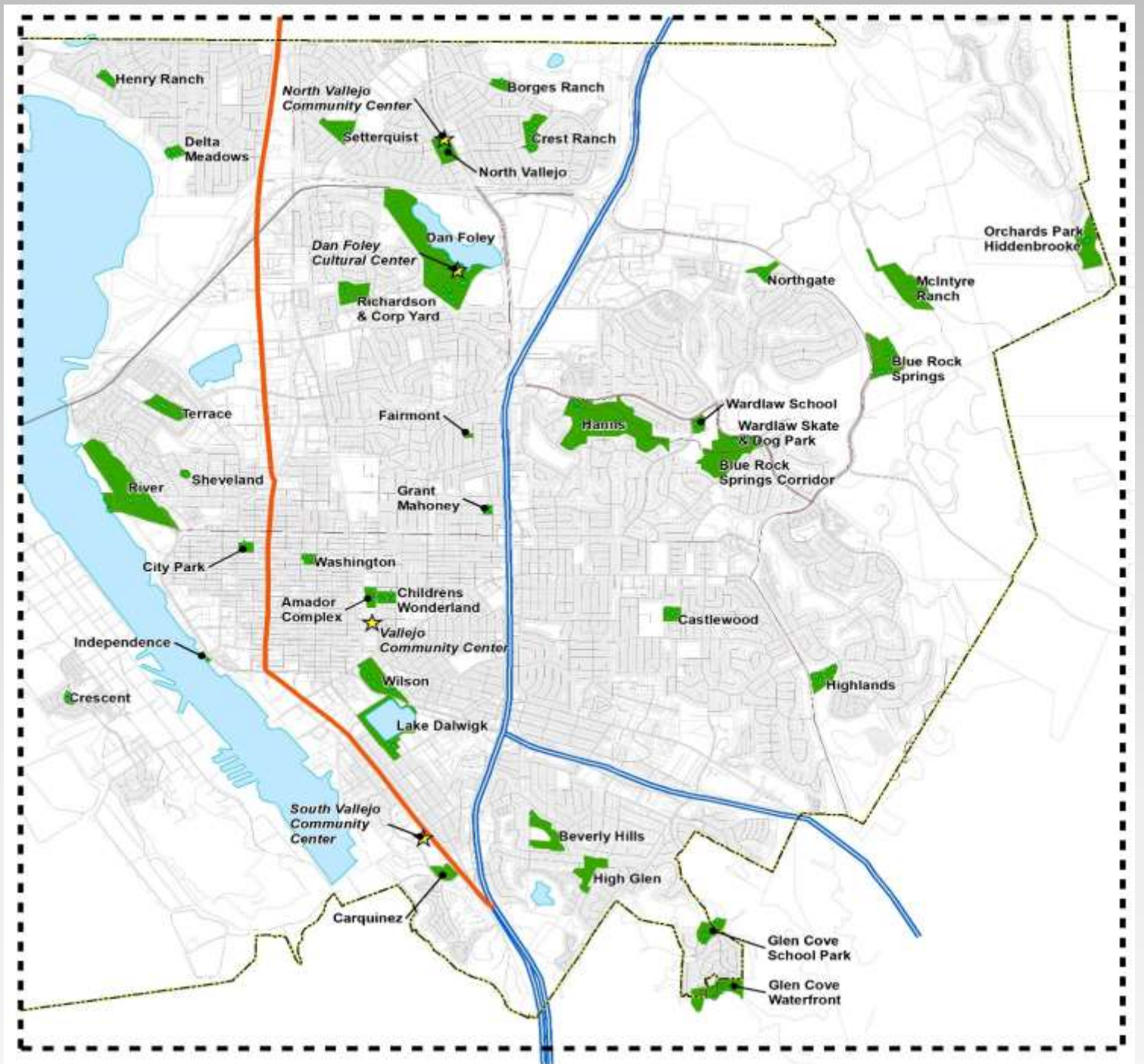
FACTORS TO INCREASE PARTICIPATION





Inventory & Level of Service

The GVRD System



North Vallejo



◆ Components
 ★ Indoor Facilities
 □ Locations
 ~ Bike trails
 ⬮ GVRD Boundary



North Vallejo

Initial Inventory Date:

27.6

Total Neighborhood
GRASP® Score

27.6

Total Community
GRASP® Score

Approximate Park Acreage:

14.7

Owner:

Vallejo City

Design and Ambiance			
Drinking Fountains	2	Shade	2
Seating	2	Trail Connection	0
BBQ Grills	0	Park Access	2
Dog Pick-Up Station	2	Parking	2
Security Lighting	1	Seasonal Plantings	0
Bike Parking	2	Ornamental Plantings	2
Restrooms	0	Picnic Tables	1
2			

General Comments

Good topography. Some illegal dumping happening. Broken lights

Components with Score

MAPID	Component	Quantity	Lights	Neighborhood Score	Community Score	Comments
L151	PARCEL	1		2	2	
C005	Diamond Field	1	Y	2	2	Only half outfield fencing
C004	Rectangular Field, Large	1		1	1	Rectangle overlays diamond field
C003	Open Turf	1		2	2	
C002	Basketball Court	1	Y	1	1	Broken goal
C001	Playground, Local	1		2	2	

Mapping Location and Quality of Components

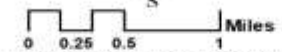
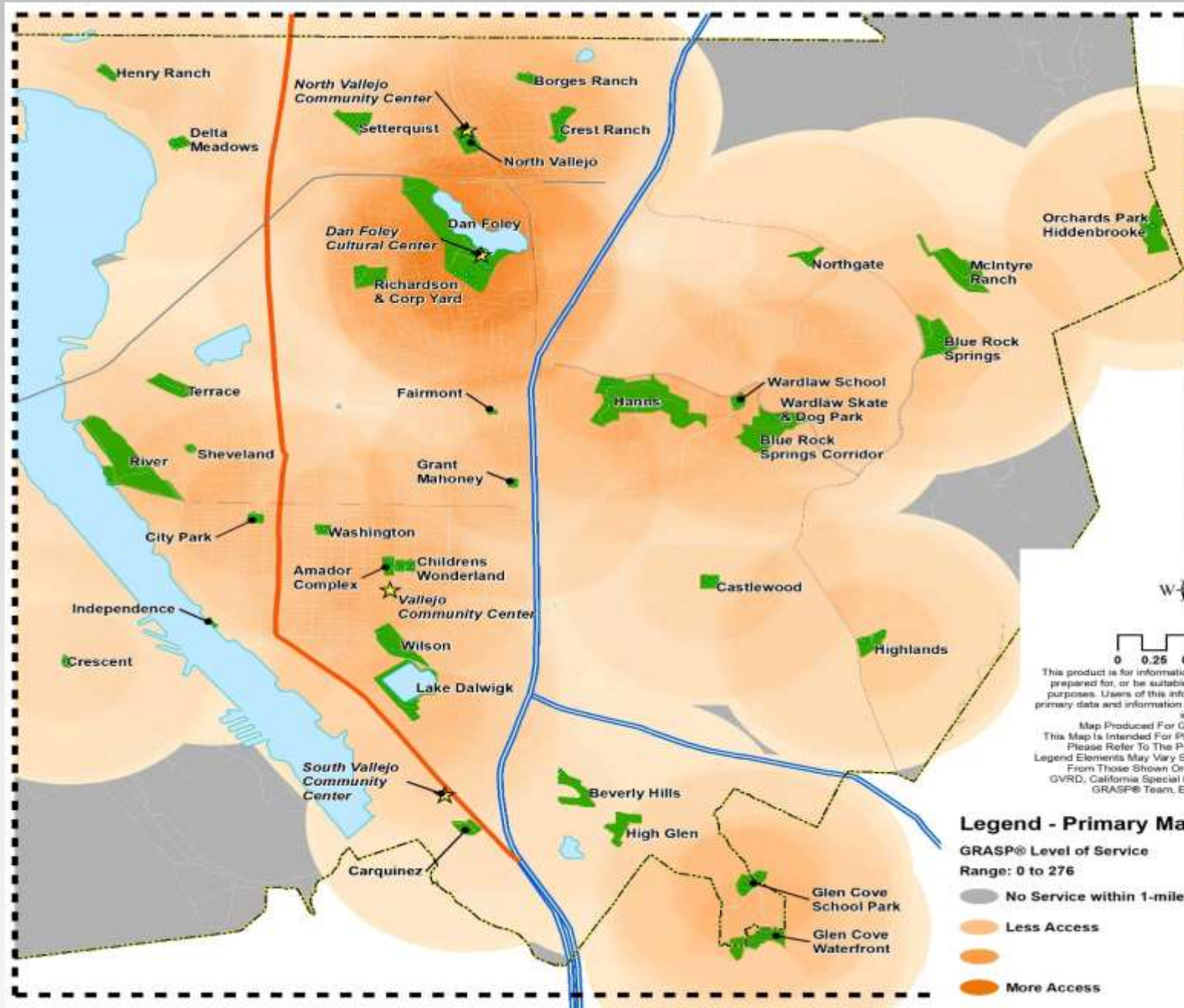


LOCATION	GRASP® Score/Rank	LOCATION	GRASP® Score/Rank
Amador Complex	50.6	Henry Ranch	24
Beverly Hills	4.4	High Glen	2.2
Blue Rock Springs	57.6	Highlands	48
Blue Rock Springs Corridor	8.8	Independence	6
Borges Ranch	19.8	Lake Dalwigk	38.4
Carquinez	9.6	McIntyre Ranch	6.6
Castlewood	35.2	North Vallejo	27.6
Childrens Wonderland	45.6	Northgate	24
City Park	115.2	Orchards Park Hiddenbrooke	52.8
Crescent	17.6	Richardson and Corp Yard	28.8
Crest Ranch	33.6	River	24.2
Dan Foley	113.1	Setterquist	24.2
Delta Meadows	15.4	Sheveland	8.8
Fairmont	13.2	Terrace	8.4
Glen Cove School Park	55.2	Wardlaw School	22
Glen Cove Waterfront	24	Wardlaw Skate and Dog Park	31.2
Grant Mahoney	30.8	Washington	16.5
Hanns	28.8	Wilson	18

Sort for things such as low scoring components

Map ID	Location	Component	Quantity	GRASP® Score	Comments
C123	Amador Complex	Open Turf	1	1	Poor condition
C002	Beverly Hills	Playground, Local	1	1	Old equipment on sand
C003	Beverly Hills	Open Turf	1	1	Poor condition
C008	Borges Ranch	Open Turf	1	1	Poor condition
C009	Borges Ranch	Playground, Local	1	1	Old equipment on sand
C148	Borges Ranch	Shelter, Small	3	1	Small wood arbors
C013	Castlewood	Open Turf	1	1	Poor condition
C028	Crest Ranch	Basketball Court	1	1	Poor surfacing
C029	Crest Ranch	Basketball, Practice	1	1	Poor surfacing
C041	Dan Foley	Basketball Court	1	1	Wavy surface and goals out of shape
C137	Dan Foley	Shelter, Small	1	1	A small makeshift shelter that probably should be standardized or removed
C043	Delta Meadows	Basketball, Practice	2	1	Unlevel
C073	Independence	Public Art	1	1	Propeller, cannons, and concrete structure.
C075	Lake Dalwigk	Basketball Court	1	1	Missing nets and broken rims. Surfacing cracking. Infilled postholes.
C076	Lake Dalwigk	Basketball, Practice	1	1	Missing nets and broken rims. Surfacing cracking. Infilled postholes.
C082	North Vallejo	Basketball Court	1	1	Broken goal
C084	North Vallejo	Rectangular Field, Large	1	1	Rectangle overlays diamond field
C094	Richardson and Corp Yard	Playground, Local	1	1	Old faded equipment on EWF
C165	River	Trailhead	1	1	Lacks signage or wayfinding
C101	Sheveland	Playground, Local	1	1	Cool location, but old equipment on sand
C102	Sheveland	Open Turf	1	1	Steep hill
C103	Terrace	Diamond Field	1	1	Poor condition
C104	Terrace	Playground, Local	1	1	On sand
C105	Terrace	Shelter, Small	1	1	Gazebo, raised, lacks roof
C156	Wardlaw Skate and Dog Park	Trailhead	1	1	Lacks signage or wayfinding
C113	Washington	Diamond Field	1	1	Infield and fencing need repair
C117	Wilson	Diamond Field	2	1	Smaller fields. Over grown, rusted seating, locks on gates,
C119	Wilson	Playground, Local	1	1	Old equipment on EWF

GRASP® Neighborhood Access



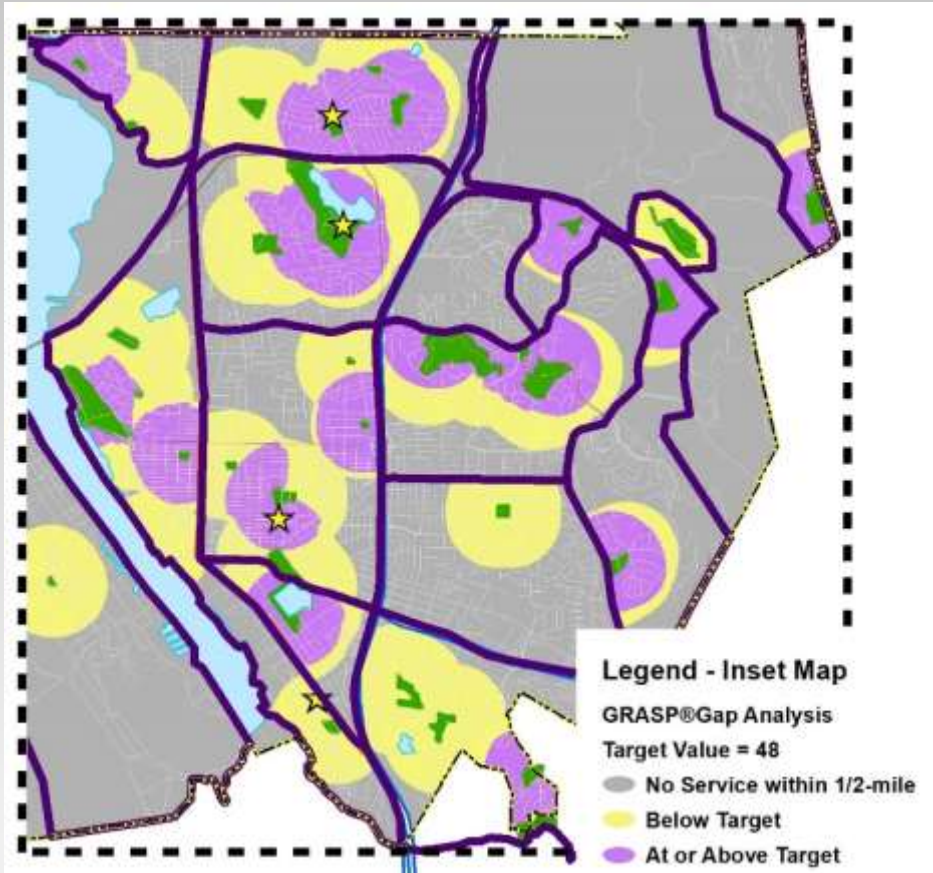
This product is for informational purposes and may not have been prepared for, or be suitable for legal, engineering, or surveying purposes. Users of this information should review or consult the primary data and information sources to ascertain the usability of the information.

Map Produced For GVRD - By The GRASP® Team
 This Map Is Intended For Planning & Discussion Purposes Only -
 Please Refer To The Project Document For Map Details
 Legend Elements May Vary Slightly In Size, Color And Transparency
 From Those Shown On Map GIS Data Sources Include:
 GVRD, California Special Districts Association, Solano County,
 GRASP® Team, Esri, Copyright© 2020 GVRD

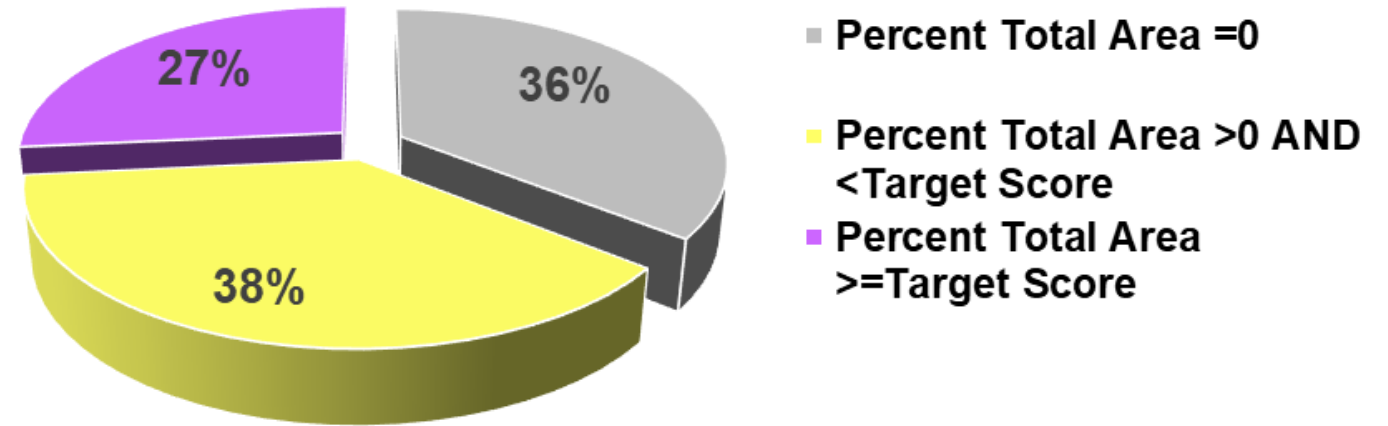
Legend - Primary Map

- | | | | |
|--|---------------------|-------------------|---------------|
| GRASP® Level of Service
Range: 0 to 276 | ★ Indoor Facilities | Freeway | Locations |
| Grey: No Service within 1-mile | ● Components | Highway | Water Body |
| Light Orange: Less Access | ~ Existing Trail | Major Road | GVRD Boundary |
| Orange: More Access | | Other Street/Road | |

GRASP® Walkable Access



% of Population with Walkable Access to Outdoor Recreation



Recommendation Focus and Timeframe

- Primary focus on:
 - Maintaining
 - Sustaining
 - Improving
- Priority timeframe
 - Short-term (up to 3 years)
 - Mid-term (4-6 years)
 - Long-term (7-10 years)



Master Plan Goals and Objectives

Goal #1: Maintain Organizational Effectiveness, and Resilient, Sustainable Funding

Objective 1.1 Review and improve organizational structure to meet current and future staffing needs

Objective 1.2 Increase staffing levels between 6 and up to 8 Full-time equivalent positions (FTEs)

Objective 1.3 Increase and improve communication to District residents

Objective 1.4 Explore additional funding options

Objective 1.5 Develop and Improve relationships with key partners

Objective 1.6 Develop a resource allocation philosophy/pricing model

Master Plan Goals and Objectives

Goal #2: Aspire to be a Connected and Walkable Community

Objective 2.1 Expand greenways, pathways, and trails connectivity based on development of a trails master plan

Master Plan Goals and Objectives

Goal #3: Continue to Improve and Enhance Recreation Programs and Service Delivery

Objective 3.1 Increase program spaces, staffing, and resources to create new programming opportunities for District residents

Objective 3.2 Promote active lifestyles through recreation

Objective 3.3 Explore opportunities to increase the number of community events based on demand, trends, and culture

Objective 3.4 Develop additional recreational opportunities

Objective 3.5 Work with other service providers to develop programs and services to meet demand and trends

Objective 3.6 Develop a formal recreation program evaluation process

Master Plan Goals and Objectives

Goal #4: Prioritize Access to Parks and Programs for all District Residents

Objective 4.1 Focus on diversity, equity, inclusion and social justice

Master Plan Goals and Objectives

Goal #5: Improve Quality Park Experiences

Objective 5.1 Continue to expand, and improve existing facilities and amenities

Objective 5.2 Repair, upgrade, and/or replace the low scoring amenities from the inventory assessment

Objective 5.3 Improve daily upkeep and user experiences in the parks

Objective 5.4 Prioritize and improve safety and security in parks and facilities

Objective 5.5: Develop new components at existing parks based on level of service analysis

Objective 5.6 Upgrade comfort and convenience amenities at existing facilities

Objective 5.7 Explore opportunities for new aquatics, recreation, and sports facilities

Master Plan Goals and Objectives

Goal #6: Invest in Existing and New Facilities for System-Wide Improvement

Objective 6.1. Park-specific improvements to existing recreation facilities

Objective 6.2. System-wide recommendations

Objective 6.3. New areas of investment

Master Plan Objectives, and Action Steps (sample)

Objective 6.1: Park-specific improvements to existing recreation facilities

Actions	Capital Budget Estimate	Operational Budget Impact	Timeframe to Complete
6.1.g Children's Wonderland: Create a concept plan for the inclusion of a splash pad with circulating water system	\$50K for consultant fees, planning, and outreach Splash Pad with Recirculating water = \$500K to \$750K	\$12K - 25K utilities	Mid-term
6.1.h High Glen: Create a disc golf course	\$20k for consultant fees, planning, and outreach \$20K – 50K to construct, based on soil and park condition	Staff time, operations and maintenance costs 4K per acre	Mid-term

Thank You For Your Time & Consideration!



Art Thatcher, Principal
artt@greenplayllc.com
Direct: 757-592-3103

**Jeff Milkes, CPRP, Project
Consultant**
jeffm@greenplayllc.com
Direct: 720-788-3558

